

LOGISTICS & TRANSPORTS THESSALONIKI EXPO

THE LOGISTICS TRADE SHOW
FOR THE BALKANS AND S.E. EUROPE



10-12
APRIL
2025

CONFERENCES THAT
WILL BE HELD IN PARALLEL

Logi.C
LOGISTICS CONFERENCES


HELEXPO
THESSALONIKI

THE GOALS OF THE NEXT TRADE SHOW IN NUMBERS

2025

- 150** EXHIBITORS
- 8.500** VISITORS
- 1.500** INTERNATIONAL VISITORS
- 8** CONFERENCE TOPICS
- 500** B2B MEETINGS



ATTENDANCE STATISTICS OF THE PREVIOUS TRADE SHOW

2024

- 100** EXHIBITORS
- 7.200** VISITORS
- 1.300** INTERNATIONAL VISITORS
- 7** CONFERENCE TOPICS



In parallel with LOGISTICS & TRANSPORT THESSALONIKI EXPO, the "Freskon" exhibition for the international fruit & vegetable trade is being held, which is organised by HELEXPO and takes place on the same dates.

It targets the following Statistics

- 295** EXHIBITORS
- 5.000** GREEK & INTERNATIONAL VISITORS
- 250** HOSTED BUYERS

TRADE SHOW PROFILE

The Transport and Logistics Trade Show in Thessaloniki



A new exhibition event for transport and logistics was launched in April 2024 in Thessaloniki, and it was a complete success. The new **LOGISTICS & TRANSPORT THESSALONIKI EXPO** was well received by the Greek and Balkan markets, highlighting the importance of Northern Greece as a transport hub for the Balkans. The infrastructure of Northern Greece, especially the Ports and Road Axes, as well as the railway connections with the Balkan capitals and the existing and future Logistics Centres, lay the foundations for the region's leading role in the Balkan Peninsula.

The next **LOGISTICS & TRANSPORT THESSALONIKI EXPO** will take place on **10-12 April 2025** at the International Exhibition Centre of Thessaloniki (TIF-HELEXPO), attracting all professionals from Greece, the Balkans and the international markets alike.

The first time the trade show was held, it succeeded in bringing together neighbouring countries that systematically cooperate with each other as well as with the North and the rest of Greece in terms of export trade and logistics. For another year, this trade show and conference event focuses on the connection and cooperation between these countries, with a focus on Thessaloniki, offering additional prospects for cooperation to companies based in Greece.

Transport & logistics companies, ports, forwarding companies, rail and road transport, digital technologies, warehouse equipment, hoisting machines, racking, automation and commercial vehicles are the sectors covered by the trade show.

A large number of businesses from Greece and the Balkan countries, chambers of commerce, professional bodies and the state have already expressed their interest in the next trade show and intend to participate, supporting an event of this significance that takes place in Thessaloniki. The trade show will be held together with the LOGIC (Logistics Conferences) conference event, a familiar event that has been established in the market for almost 2 decades.



GREECE'S PIVOTAL ROLE IN THE BALKANS

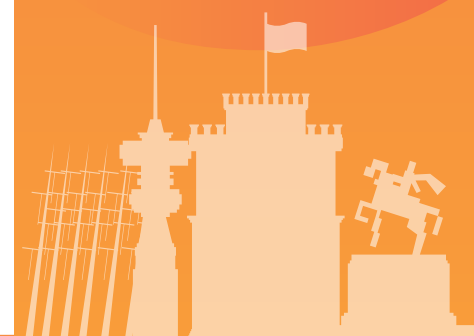
The role of the supply chain & logistics has been constantly improving in Greece in the past 8 years. The sector's contribution in the GDP approximates 11-13% trending upwards, whereas the high level of services provided by Greek logistics companies, combined with the completion of important infrastructure projects in the country, the development of ports and the strong investment interest, have resulted in making Greece one of the top 20 countries with the most developed logistics in the world according to the World Bank's global Logistics Performance Index (LPI no 19), compared to the 42nd position the country occupied only 5 years ago.

In this landscape, it is self-evident that the economy of Northern Greece plays an important role for the Balkan region and SE Europe, with Thessaloniki gradually claiming the spotlight it deserves as the Transit & Logistics Hub of the wider region. The investment growth actions taken by Thessaloniki Port Authority combined with the existence of a reliable support network (Igoumenitsa, Volos, Kavala, Alexandroupoli), the investments in large logistic centres and the railway and intermodal synergies with the Balkan neighbouring countries give the promise of a bright future for the region and its interconnection with Europe and the Middle East.

WHY YOU SHOULD PARTICIPATE

LOGISTICS & TRANSPORT THESSALONIKI EXPO is a unique opportunity for companies offering transport and logistics services and warehouse equipment to participate and get in touch with thousands of businesses from Greece and abroad. The new era that Greece, and especially Thessaloniki, has entered, along with the new prospects created by the infrastructure, the increase in trade and exports, the strategic position of Greece in SE Europe and the growing interest of investors create opportunities for all businesses in the sector.

By participating in the trade show, you are taking on a leading role in a high-profile event in Northern Greece, meeting with businessmen and investors from the Balkans and Europe and strengthening your corporate presence.



TIF-HELEXPO EXHIBITION CENTRE

The Thessaloniki International Exhibition Centre is located in the city centre, with direct access to the "Makedonia" International Airport, the road to the Balkans and the entire railway network of the country. It covers a total surface area of 180,000 sq.m., of which 62,000 sq.m. is covered exhibition space, distributed in a complex consisting of 17 pavilions.

With free parking for exhibitors and visitors, indoor and outdoor dining, ATMs and hotels nearby to complement the easy access to the exhibition centre, it ensures the best possible hospitality, entertainment and service for exhibitors and visitors.



CATEGORIES OF EXHIBITS

1

TRANSPORT, LOGISTICS & FREIGHT FORWARDING SERVICES

- ▶ International and National Transport
- ▶ Logistics, 3PL & Warehousing Services
- ▶ Transport & Distribution Services (last mile)
- ▶ Freight Forwarders
- ▶ Road Transport
- ▶ Railway Transport
- ▶ Maritime Transport
- ▶ Air Transport
- ▶ Courier Companies
- ▶ Logistics Consultants

2

WAREHOUSE EQUIPMENT, AUTOMATION, GOODS PACKAGING & TECHNOLOGY

- ▶ Hoisting Machines
- ▶ Racking and Warehouse Management Systems
- ▶ Automation and Robotic Systems
- ▶ Information Systems (ERP, WMS, AI)
- ▶ Barcoding, Rfid, Ex-Van, Voice Picking Systems
- ▶ Warehouse and Industrial Building Construction
- ▶ Machinery and Materials for Goods Packaging
- ▶ Pallets, Cartons, Crates, etc.

3

COMMERCIAL VEHICLES & TRANSPORT TECHNOLOGIES

- ▶ Professional Transport and Distribution Vehicle Dealerships
- ▶ Electric and Hybrid Commercial Vehicles
- ▶ Electrification Infrastructure, Chargers and Batteries
- ▶ Leasing & Renting of Vehicles and Machinery
- ▶ Telematics, Transport Technologies & Fleet Management Systems

Logi.C

LOGISTICS CONFERENCES

LOGI.C 2025 CONFERENCES

The LOGI.C - logistics conferences renew their annual appointment with the freight transport, logistics and supply chain management market in Thessaloniki, as they will be held in the context of the next edition of Logistics & Transport Thessaloniki Expo, in the premises of TIF-HELEXPO. In a three-day multidisciplinary event, with the support of both leading professional organisations of Northern Greece and the collective bodies of the logistics sector, the LOGI.C conferences aim to bring together companies, executives, academics, business consultants, students and employees in the wider supply chain sector for yet another year, presenting everything new in terms of trends, future challenges, technological changes and strategy development for Thessaloniki and Northern Greece in general.

A number of players in the sector, as well as bodies such as the Federation of Industries of Greece, the Greek Exporters Association, the Thessaloniki Chamber of Commerce & Industry, the Hellenic Institute of Transport / General Secretariat for Research and Innovation, the Greek Association of Supply Chain Management and the Hellenic Federation of Road Transports have already positively expressed their support and participation in LOGI.C conferences, raising the bar for what can be expected in terms of participation in the conferences.

VISITOR PROFILE

- ▶ Trading Companies of All Sectors
- ▶ Organised Retail and Wholesale Trade
- ▶ E-Shops
- ▶ Industries and Craft Enterprises of All Sectors
- ▶ Food Industry & Wholesale Trade
- ▶ Transport, Logistics, Distribution, Courier and Warehousing Companies
- ▶ Road Transport Companies
- ▶ Freight Forwarding Companies
- ▶ Port and Infrastructure Representatives
- ▶ Construction Companies
- ▶ Distribution and Transport Companies with Vehicle Fleets
- ▶ Professional Drivers, Forklift Operators and Warehouse Personnel
- ▶ Public Bodies, Local Authorities, Military Corps, Banks and Public Administration
- ▶ Professors, Business Consultants, Students

PROMOTIONAL ACTIVITIES

Thanks to its extensive promotion in Greece & abroad, the trade show will convey a strong communication message with a touch of advertising.



- ▶ **DIGITAL ADVERTISING**
Websites, newsletters, social media, Google Ads & mass sms, in Greece & abroad



- ▶ **PRINTED ADVERTISING**
In international magazines of 8 countries



- ▶ **VISITOR INVITATIONS**
Printed and electronic invitations in Greece and abroad



- ▶ **TV**
Commercials on national channels

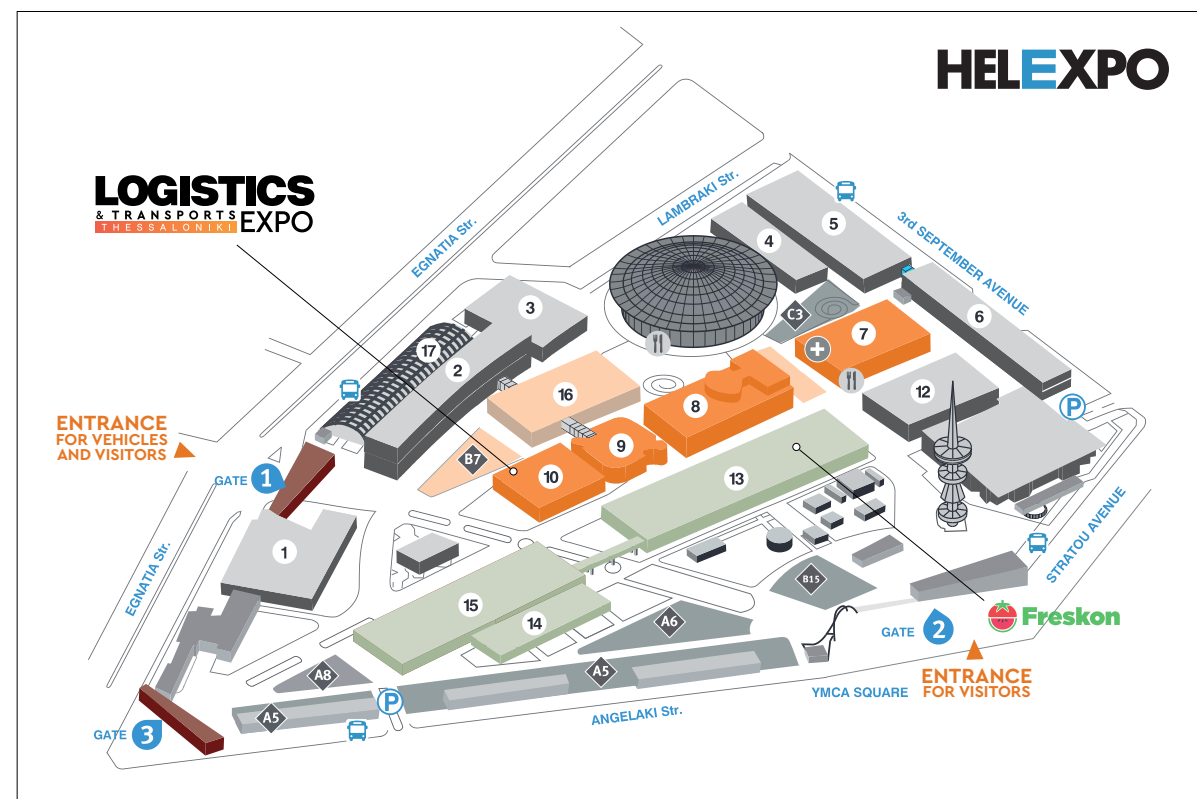
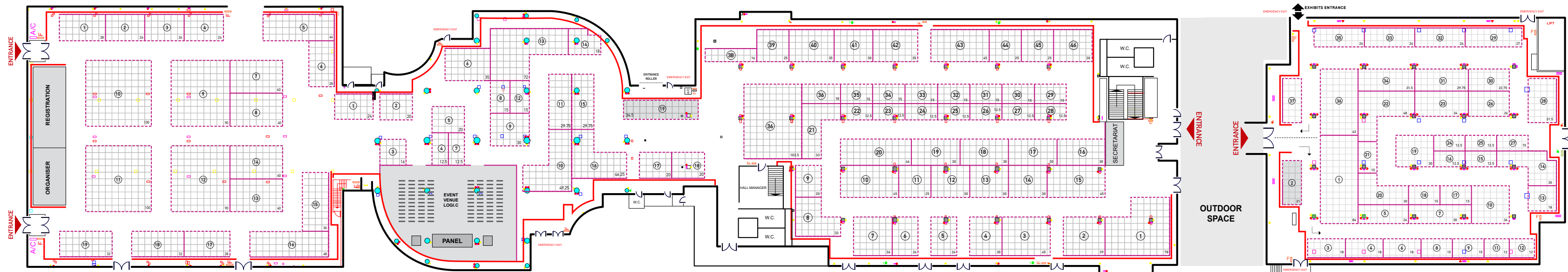


- ▶ **RADIO**
Commercials on stations with the highest audience rating throughout the country and selected countries abroad



WATCH THE VIDEO OF THE TRADE SHOW HERE





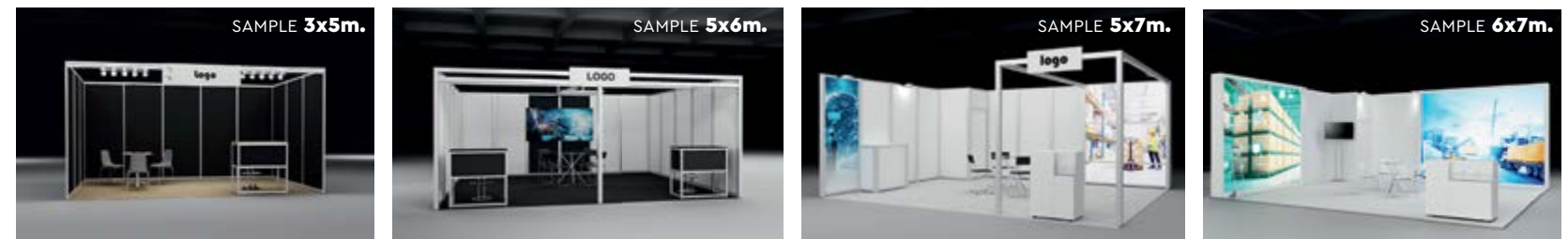
OPENING HOURS

THURSDAY APRIL 10 TH	10:00-19:00
FRIDAY APRIL 11 TH	10:00-19:00
SATURDAY APRIL 12 TH	10:00-19:00

MAIN STRUCTURE 25€/m²

- Beige back panels with beige carpet
- 1 desk • 3 chairs, grey
- 1 small table • Structure front
- 5 Led lamps on a rail
- 1 power socket, 500W

READY-MADE EXHIBITION STAND SOLUTIONS



Sample Size	Package Name	Price (Space Rental & Construction Package)
3x5m	BASIC_MINIBOOTH 40€/m ² (cost of construction)	12,5 m ² / 2.200€* 15 m ² / 2.500€*
5x6m	BASIC_PLUS 60€/m ² (cost of construction)	20 m ² / 3.700€* 30 m ² / 5.400€*
5x7m	EXECUTIVE 70€/m ² (cost of construction)	30 m ² / 5.800€* 45 m ² / 8.700€*
6x7m	PREMIUM 120€/m ² (cost of construction)	30 m ² / 7.100€* 45 m ² / 9.950€*

COST OF STAND RENTAL

Free structure (Price for space without stand)

One side:	130 €/m ²
Two sides:	135 €/m ²
Three sides:	140 €/m ²
Open-air - Outdoor Space:	65 €/m ²

EXTRA CHARGES (upon request)

Basic Package:	25€/m ²
Carpet:	5€/m ²
Separating back panels:	20€ per running metre
Registration in the list of exhibitors:	200€*
Power:	45 €/kw

Prices are subject to VAT
* Includes registration in the official list of the Trade Show and digital promotion of each exhibitor's participation

Prices are subject to VAT
* The Structure Packages include space rental, the indicated type of construction, registration in the list of exhibitors, digital promotion of exhibitors on the trade show's social media and promotion through the Supply Chain & Logistics magazine.

THE ORGANISING COMPANY

With a 20-year-long stable and successful course, O.MIND CREATIVES is active in the highly demanding field of organising exhibitions & conference events as well as the publication of sectoral printed material.

With a staff of experienced executives and established partners, O.MIND CREATIVES adopts an extroverted outlook and guarantees the excellent organisation of LOGISTICS & TRANSPORT Thessaloniki EXPO.

O.MIND CREATIVES boasts very successful business activities, such as the organisation of international exhibitions and conferences in the logistics, transport and commercial vehicle sectors, as well as in the field of food industry. It also organises the successful Food Industry & Logistics trade show in Athens since 2007, as well as the CARGO TRUCK & VAN and MEAT/DAIRY/FROZEN FOOD exhibitions.

As a publishing company, O.MIND CREATIVES publishes the sectoral – professional magazines SUPPLY CHAIN & LOGISTICS, MEAT PLACE, GRILL MAGAZINE and DAIRY NEWS, providing online information through 4 high-traffic websites and managing a large number of informative social media accounts.

All of the above places it among the largest Greek companies in the exhibition sector, according to the recent ICAP sectoral study.



10-12
APRIL
2025

HELEXPO
 THESSALONIKI

> The **Freskon** exhibition is taking place at the same time

OPENING HOURS

THURSDAY	
APRIL 10 TH	10:00-19:00
FRIDAY	
APRIL 11 TH	10:00-19:00
SATURDAY	
APRIL 12 TH	10:00-19:00

Register to participate



www.logistics-expo.gr